

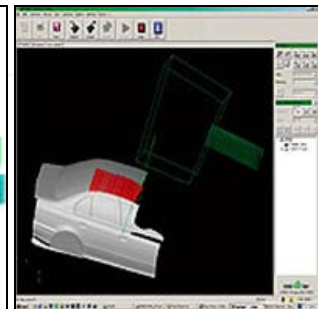
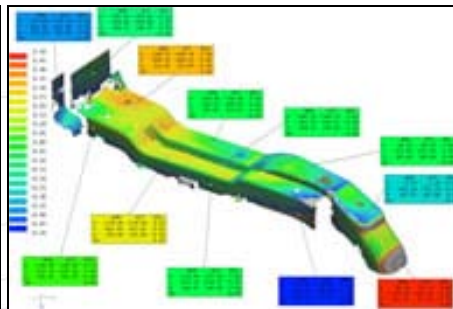
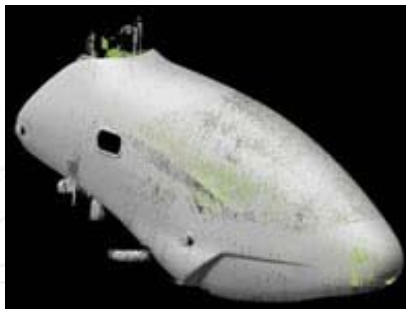
REVERSE ENGINEERING AND METROLOGY

In aitiip we have a 3D scanning system which consists of a scanner T-SCAN and an OPTOTRACK CERTUS of Steinbichler. This non-contact system of 3D scanning allows us to get CAD models from physical objects, which means, allows the introduction in a CAD program of the geometry corresponding to any physical body.



3D Scanning Services

- **Reverse Engineering:** 3D digital modeling of existing objects.
- **Quality Control:** allows comparison of the digitized model with the CAD geometry showing deviations.
- **CAE analysis:** from the digitized piece can be generated a finite element mesh.
- **Customizing parts:** starting from the geometry of an existing part can be made changes on it, adapting it to specific needs.
- **Industrial Design:** allows incorporating new product designs, shapes of existing objects or surfaces modeled by hand.
- **3D visualization:** quickly generates a 3D file that can be manipulated, assembled ... in any CAD program.
- **Digital Archive:** storing component information.



ADVANTAGES

- **High speed data acquisition.** Allows get a cloud of millions of points of the part scanned in minimal time.
- **Scanning of all types of surfaces.** Allows you to scan parts of any material without pre-treatment of surfaces.
- **Operates under adverse environmental conditions.** It can work under critical conditions of light and does not need a room fitted out for use.
- Its **portability** and features of work make the system suitable for **scanning parts “at the machine”**.
- Allows scanning **large parts**.

